

Structure of UTM

Synergy 4.0 Faculties

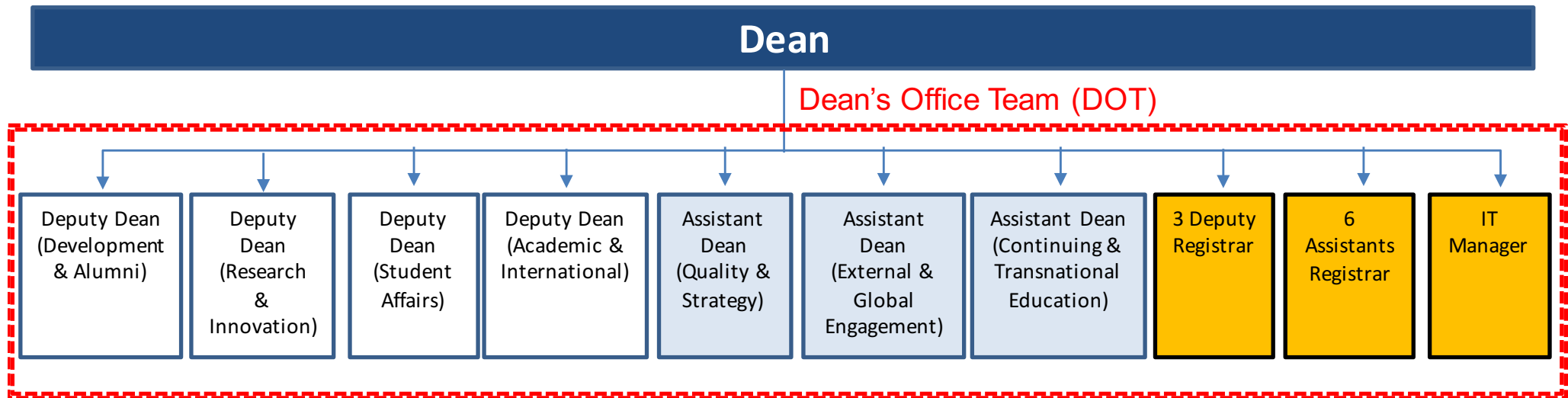
FAQ – About the UTM 4.0 Faculties

- How is a faculty 4.0 structured? The main feature of synergy? What has changed?
- Why does Faculty of Engineering structure looks “bulky”, with “layers of hierarchy”?
- What is the difference between faculty, school & program?
- What are the key role of assistant deans? Who do they report to?
- The structure of each new faculty? What has changed?

- A super-structure of UTM Faculty shall be represented by the Faculty of Engineering (hereby referred to as UTM Engineering) which is the biggest and the most elaborate of UTM faculty structures.
- The UTM Faculty has been carefully designed to include two vital elements, which are **synergy**, as well as **autonomy**.
- With these elements, a UTM Faculty has the flexibility to promote synergy, excellence and sustainability through people empowerment, creation of critical enabling functions*, spearhead inter-disciplinary co-operation and promote efficient use of resources while at the same time, maintain just the right extent of autonomy.

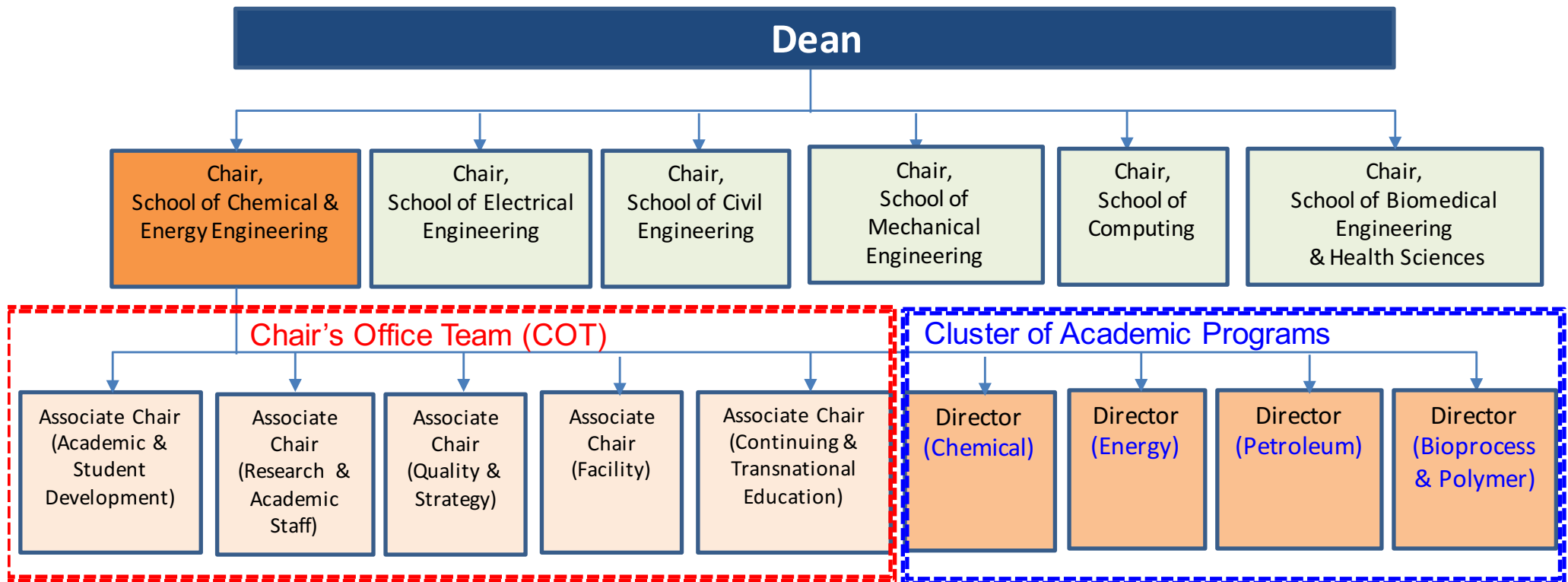
*new, enabling functions created, that are critical for UTM to achieve excellence and sustainability include (1) marketing & branding, (2) quality and strategy, (3) external & global engagement, (4) continuing & trans-national education (CTE),

Faculty of Engineering: Element of Synergy



- The synergy element of the UTM Faculty is primarily executed by the **Dean's office team (DOT)** shown above.
- The Faculty and the Dean's office is headed by the Dean who leads and oversees the execution of UTM's core functions at the level of UTM's 7 (broad) academic disciplines.
- Depending on UTM's faculty size, there are up to four Deputy Deans (DD) and three Assistant Deans (AD).
- The Deans Office also include the Deputy Registrar (DR) and Assistant Registrars (AR). The DR is the Chief Operating Officer (COO) who is in charge of the overall faculty daily operations and corporate affairs. The ARs supports operational management and planning of human resource, research and innovation, facility management as well as finance; and are in charge of operational matters pertaining to postgraduate and undergraduate studies and affairs.
- Each member of the DOT carries the full mandate of the Dean according to their respective functions. It must therefore be emphasised that the DOT is a synergy structure and NOT a hierarchical structure. The DOT member is therefore empowered to synergistically lead and manage cross-cutting faculty functions and activities with the relevant faculty administrators. The DOT members execute the central roles of UTM DVCs and ProVCs at the faculty (or the discipline-based) level.
- Take the ProVC International (ProVC-I), a member of the office of the Vice Chancellor at UTM level as example. Even though in terms of hierarchy of position, the ProVC-I maybe of a lower rank than a DVC, the ProVC-I carries the mandate of the Vice Chancellor to lead and synergise internationalisation activities by convening meetings and coordinating internationalisation programs with all relevant DVCs associated with the ProVC-I function of internationalisation. In this context, the AD external and global engagement is the ProVC-I at the Faculty level.

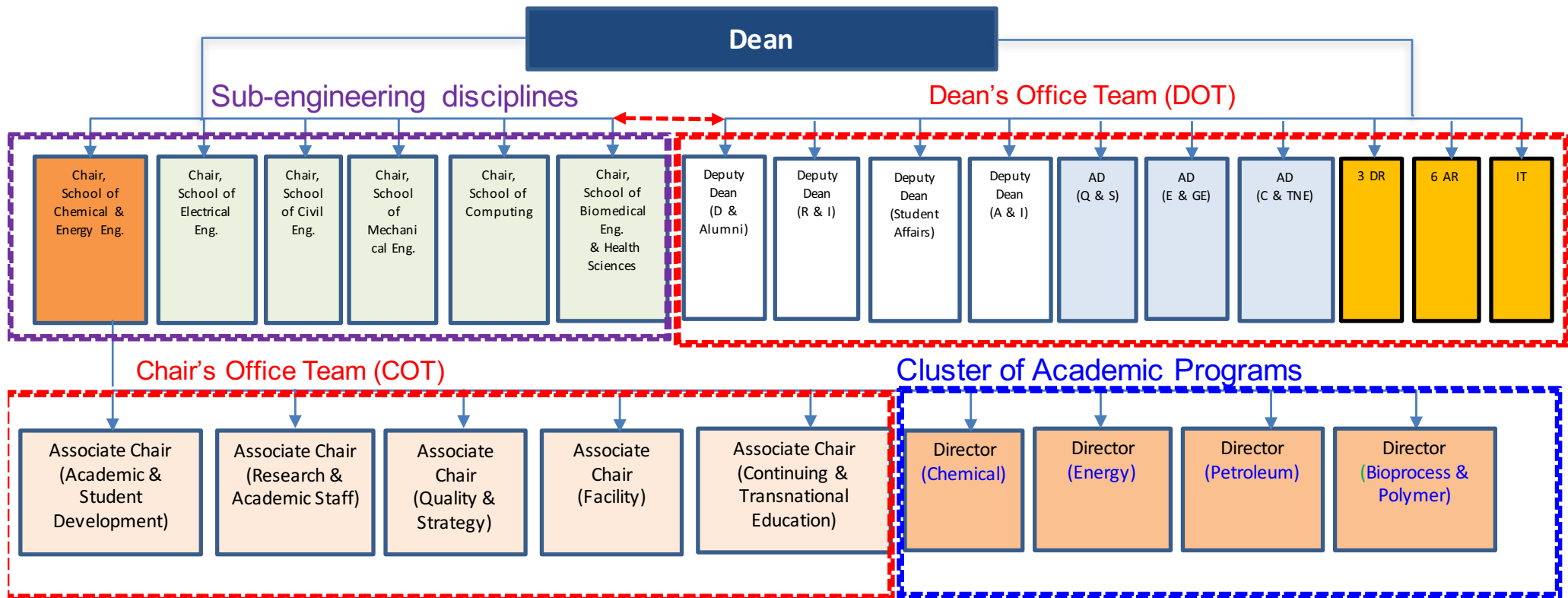
Faculty of Engineering: Element of Autonomy



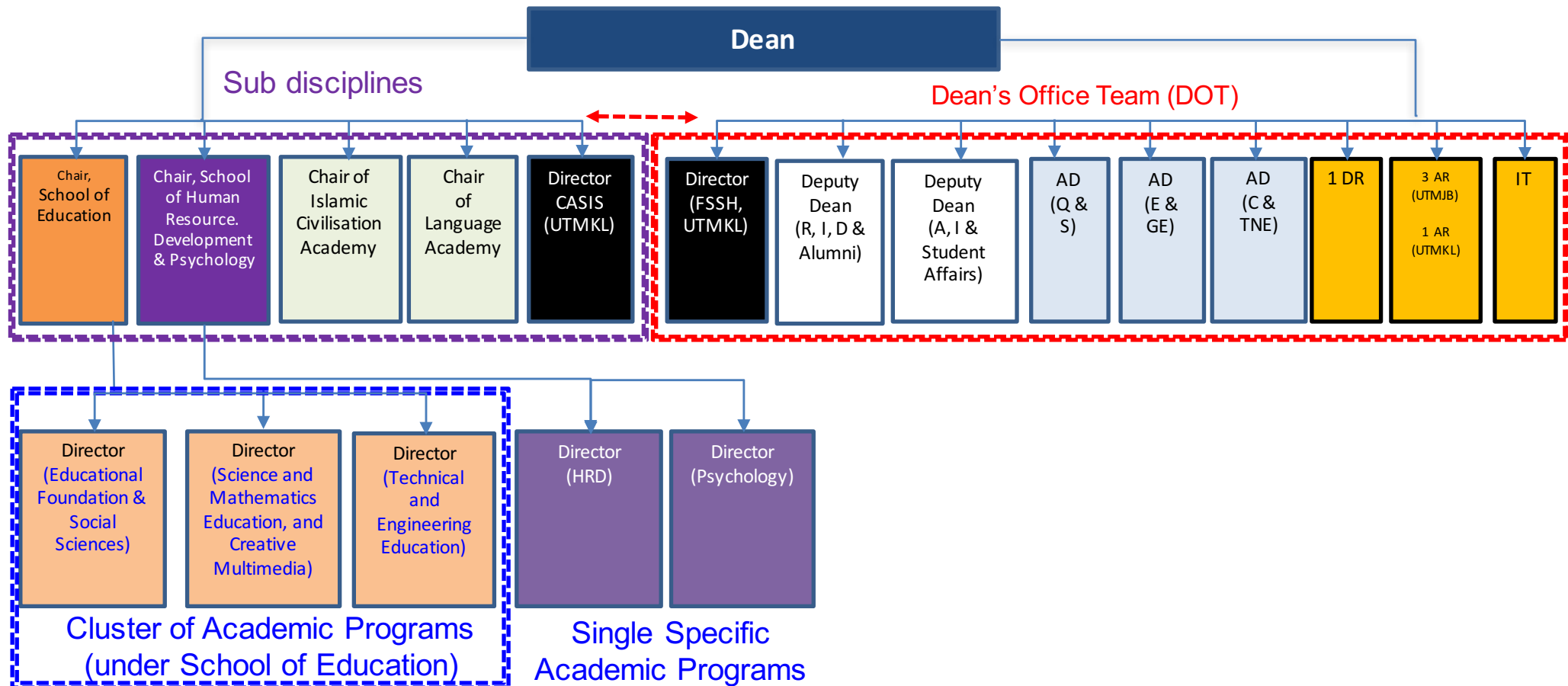
- Element of autonomy of the faculty is mainly needed in managing learning and teaching, accreditation and research under specific programs, disciplines or areas of expertise.
- A **cluster of programs** under a specific academic discipline (e.g. Chemical and Energy Engineering) under the faculty are managed under the school (headed by a chair (C), and supported by associate chairs (AC)). C and AC are members of **Chairs' office Team (COT)** that foster synergy within each school.
- Each academic program within a cluster (e.g. Petroleum Engineering – PE, or Chemical Engineering (ChE)) is managed by a program director. This **similar academic program within the FCEE cluster (e.g. ChE, PE, EE, BPE)** may comprise of sub-programs esp at the PG level.

Faculty of Engineering (Overall)

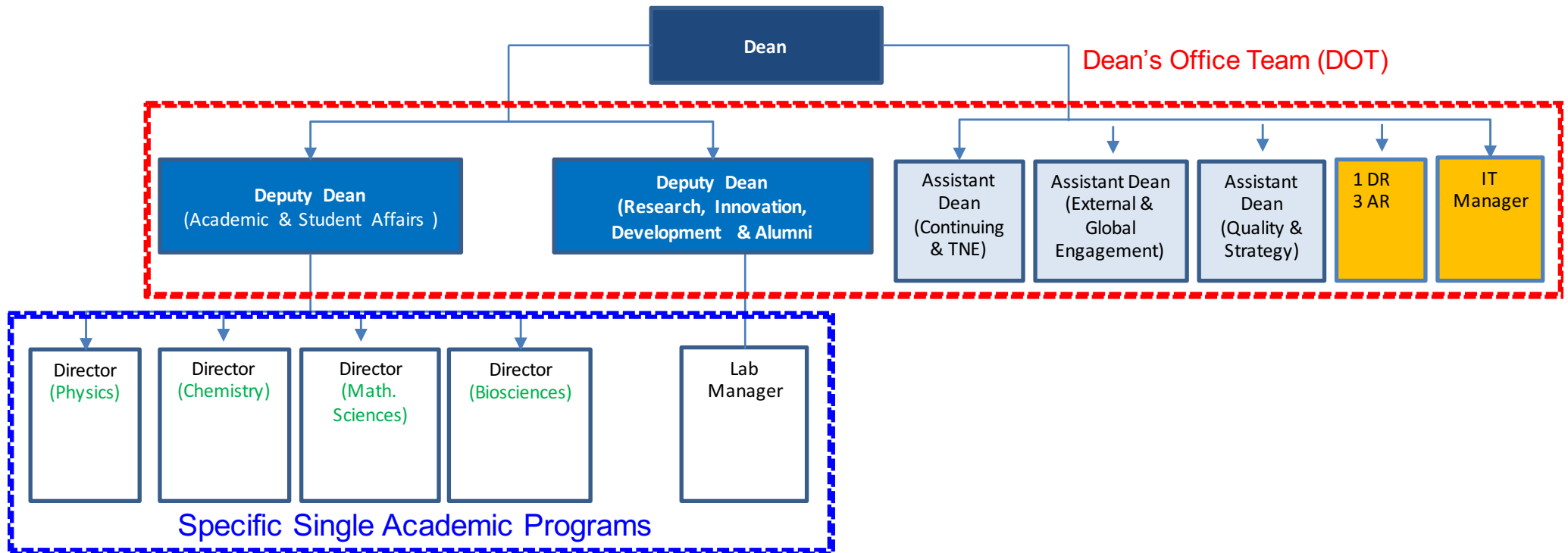
In relation to other faculty structures



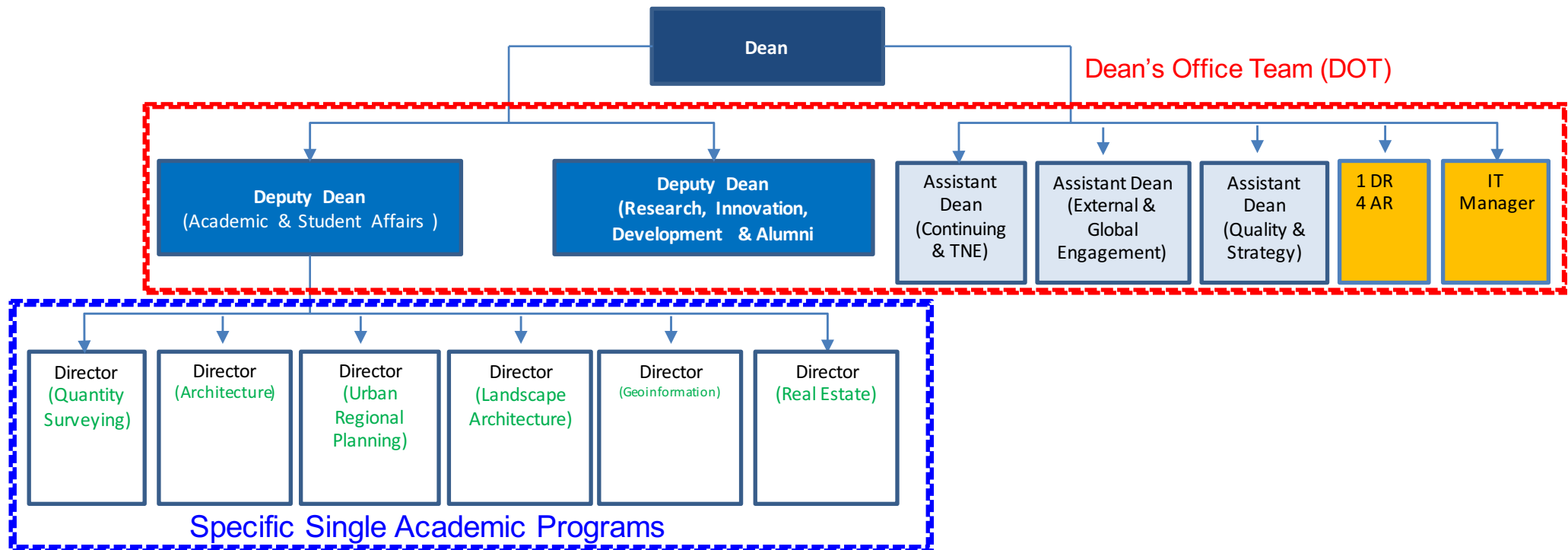
- The overall structure of UTM Engineering comprising the Deans office and 6 sub engineering disciplines is shown above.
- Note that, structures of other faculties in UTM are simplified versions of UTM Engineering. This is primarily due to the fact that, except for Faculty of Social Science and Humanities (FSSH), clusters of similar academic programs do not exist for other faculties.
- For the UTM smaller faculties, below the Dean's office structure, there are different specific and single programs (e.g., a Chemistry or a Biology program for Faculty of Science (FS), headed by program directors) as opposed to clusters of similar programs (see FS structure next)



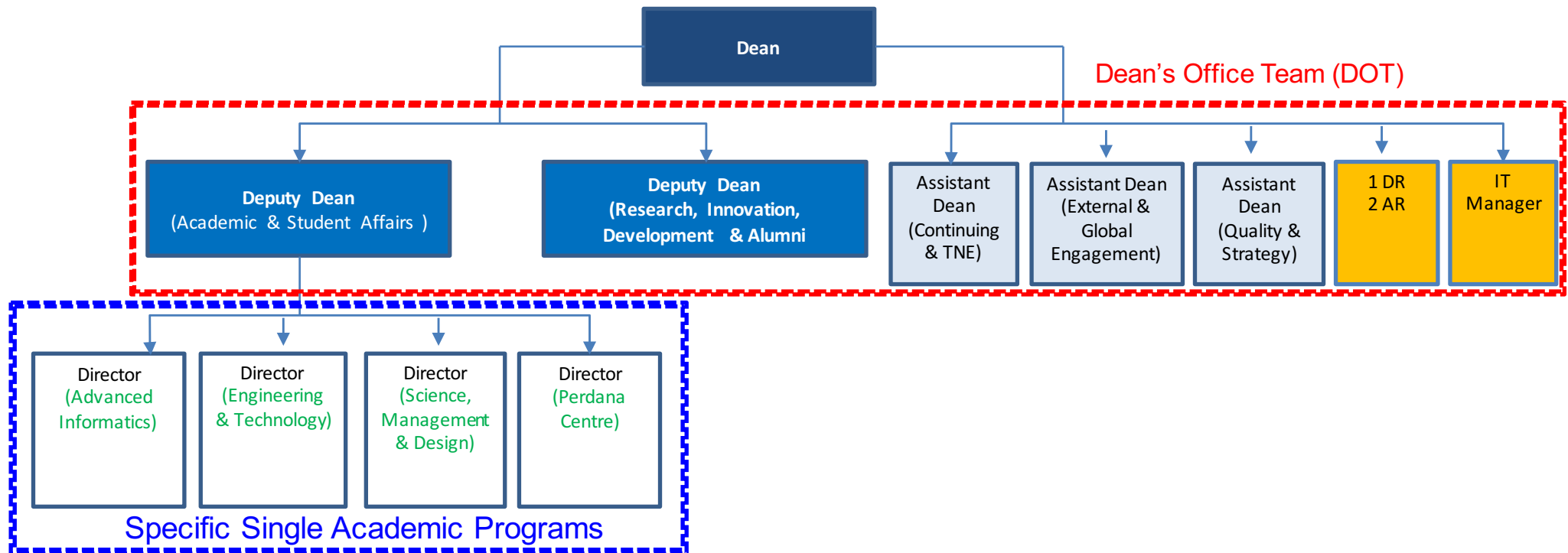
- Faculty of Social Sciences and Humanities is a merger among Faculty of Education (FP), Department of Human Resource Development and Psychology, Faculty of Management (FM), Faculty of Islamic Civilization (FTI), Language Academy (AB), and Centre for Advanced Studies on Islam, Science and Civilization (CASIS). The schools and the academy are headed by Chairs of School/Academy.



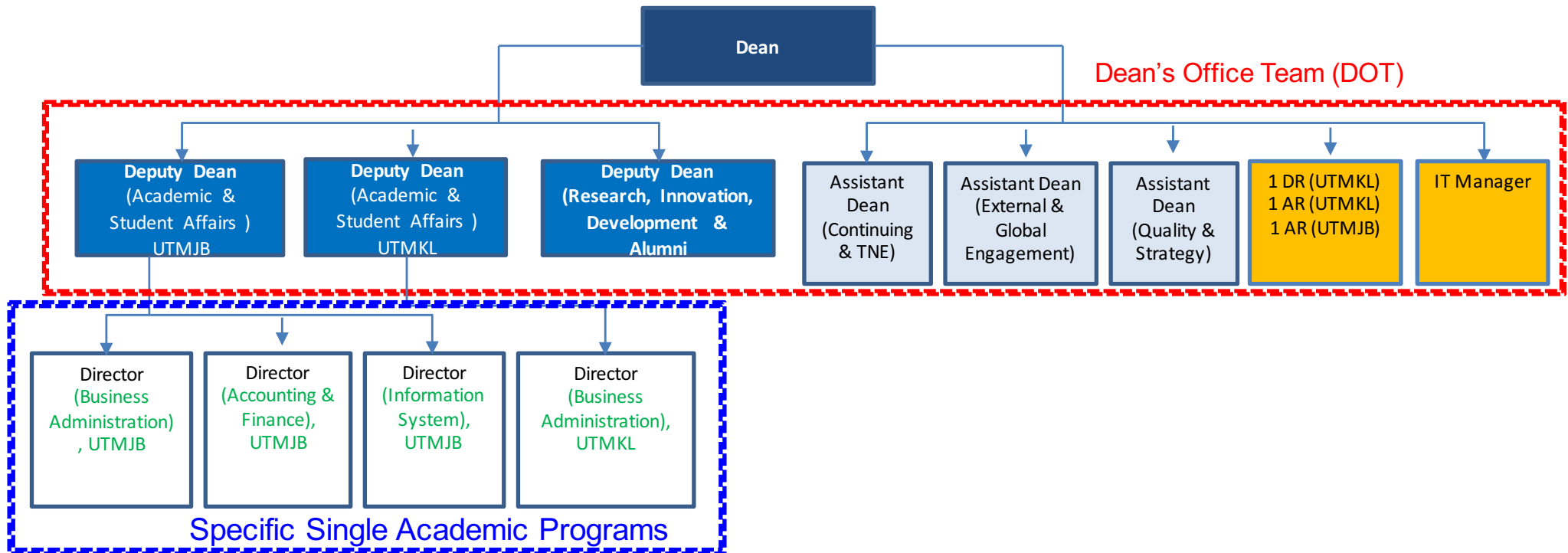
- The structure of UTM Faculty of Science comprising the Deans office and 4 **specific (single) academic programs (Physics, Chemistry, Math Sciences and Biosciences)** is shown above.
- Each program is headed by a program director



- The Faculty of Built Environment and Surveying is a merger between the Faculty of Built Environment (FAB) and the Faculty of Geoinformation and Real Estate (FGHT).
- The faculty structure comprising the Deans office and 6 specific (single) academic programs (Quantity Surveying, Architecture, Urban Regional Planning, Landscape Architecture, Geoinformation and Real Estate) is shown above.



- The Razak Faculty of Technology and Informatics (RFTI) is a merger of three different schools in UTM KL that include Razak School of Engineering and Advanced Technology, Advanced Informatics School, and Perdana School of Science, Technology and Innovation Policy.
- RFTI is a unique and diverse UTM entity covering areas of Science, Technology, Engineering (particularly engineering management), Arts and Management (STEAM)
- Shown above is the faculty structure comprising the Deans office team and four specific single academic programs under RFTI that include **Advanced Informatics; Engineering & Technology; Science, Management and Design** as well as **Perdana Centre**.



- The Azman Hashim International Business School (AHIBS) is a merger between the Accounting and Business Administration Department of the previous Faculty of Management, and the Information System Department of Faculty of Computing.
- AHIBS will be operating from both UTM Johor Bahru and UTM Kuala Lumpur.
- The Deputy Dean (Academic and Student Affairs) in UTM Johor Bahru will be assisted by 3 Directors for the field of **Business Administration, Accounting and Finance, and Information System**.
- On the other hand, the Deputy Dean (Academic and Student Affairs) in UTM Kuala Lumpur will be assisted by 1 Director for **Business Administration** program.