

CHEMICAL SPILLAGE

HOW TO CLEAN UP A MERCURY SPILLAGE



ACUTE INHALATION TOXICITY - VAPOURS.
CORROSIVE TO METALS.
REPRODUCTIVE TOXICITY.
HAZARDS
SPECIFIC TARGET ORGAN TOXICITY - CENTRAL NERVOUS SYSTEM (CNS) & KIDNEY. TOXIC TO AQUATIC LIFE AND LONG TERM EXPOSURE EFFECT



What is Mercury?

Mercury is a naturally-occurring chemical element found in rock in the earth's crust, including in deposits of coal. On the periodic table, it has the symbol "Hg" and its atomic number is 80. It exists in several forms:

- ✓ elemental (metallic) mercury
- ✓ inorganic mercury compounds
- ✓ methylmercury and other organic compounds



Mercury Spills Clean Up Steps

- Do not panic
- Ventilate area
- Leave the room immediately

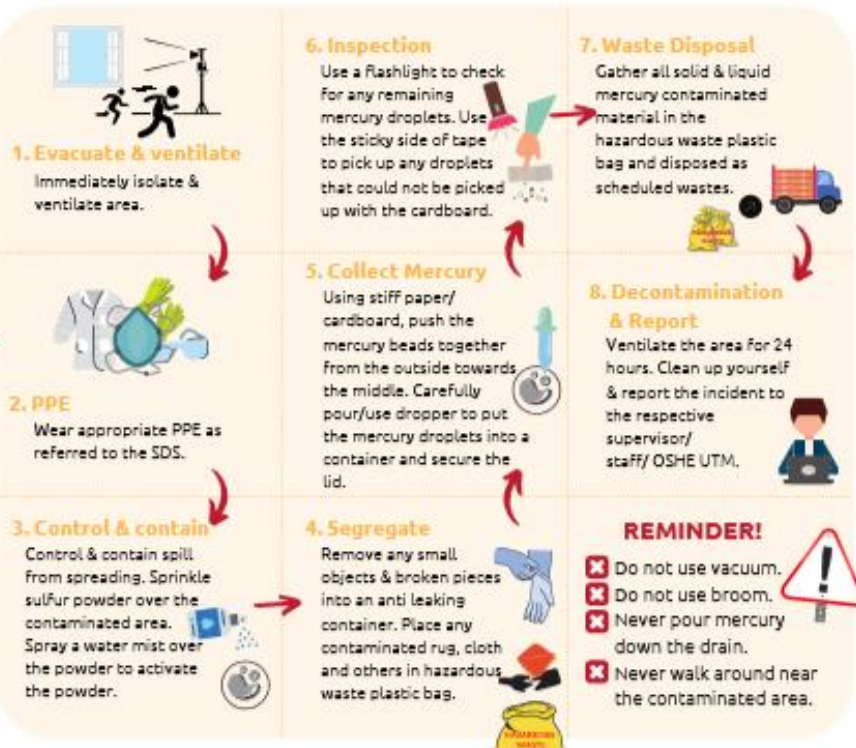


Call the Fire Fighter for cleaning and decontamination

Mercury Spill Kit



- | | | |
|---------------|----------------------|-----------------|
| 1 Dropper | 2 Sulfur powder | 3 Mercury label |
| 4 Cardboard | 5 Nitrile glove | |
| 6 Torch light | 7 Plastic container | |
| 8 Sticky tape | 9 Sealed plastic bag | |



REMINDER!

- ✗ Do not use vacuum.
- ✗ Do not use broom.
- ✗ Never pour mercury down the drain.
- ✗ Never walk around near the contaminated area.





CHEMICAL SPILLAGE

HOW TO CLEAN UP A MINOR HAZARDOUS CHEMICAL SPILL



1. Alert

Alert workers in the vicinity of the spill.



2. Ventilate area

Turn off open flames and heat sources if the spilled chemical is flammable. Ventilate area.



3. Refer SDS

Wear appropriate PPE. Avoid inhaling any vapours emitted from the spill.



4. Control & Contain

Control & contain spill with appropriate absorbent material. Or sweep solid spills into a dustpan.



5. Segregate

If broken glass is present, use scoop to place it in an appropriate container.



6. Clean up

Refer SDS on how to clean the spill.



7. Waste Disposal

Gather all solid & liquid contaminated material and put in the scheduled waste plastic bag. Disposed as scheduled wastes.



8. Decontaminate

Decontaminate the area, equipment and cloth used. Clean up yourself.



9. Report

Report the incident to the respective supervisor/SHE/OSHE UTM.

